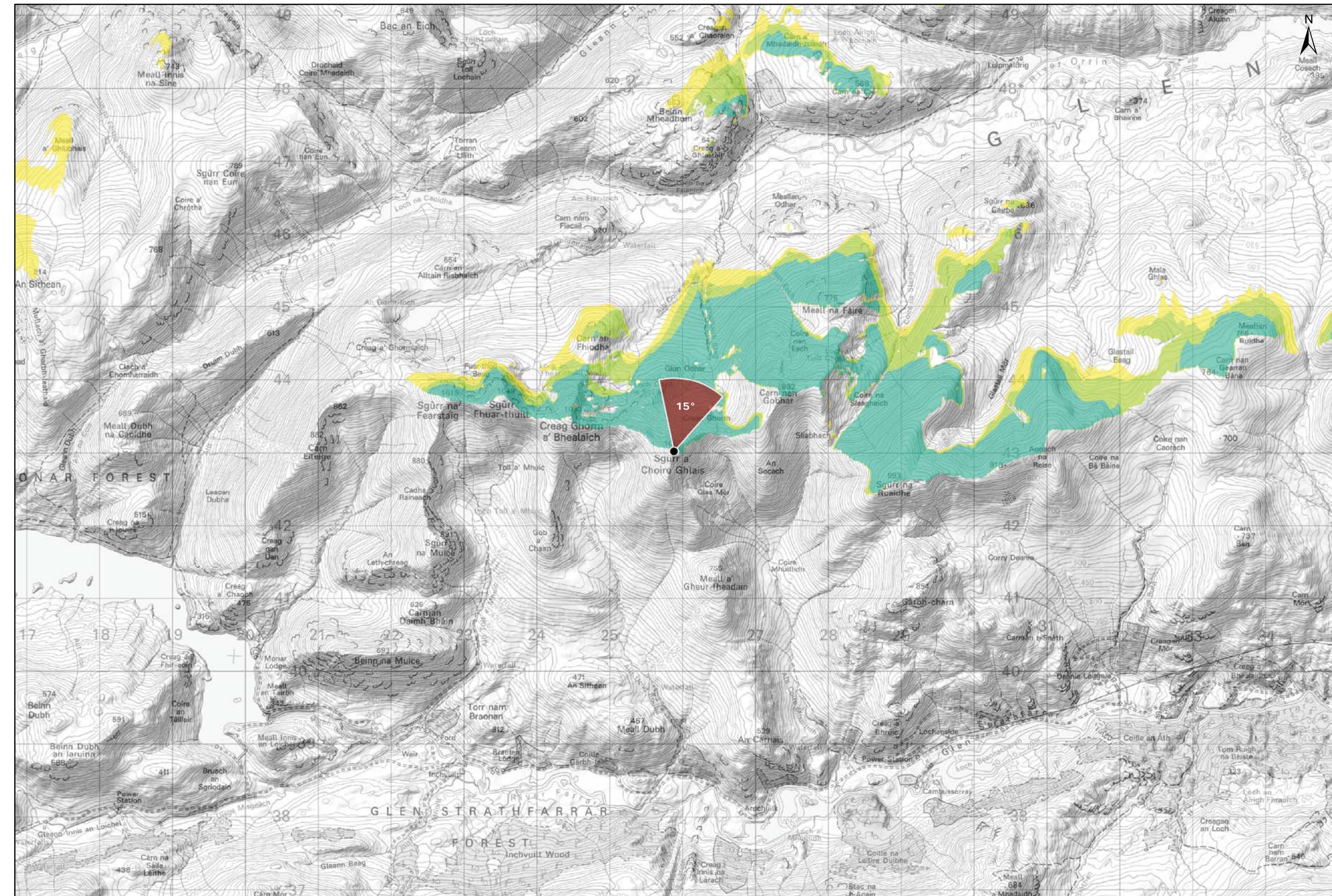


Viewpoint Location Plan Baseline Panorama
Scale: 1:150,000



Viewpoint Location Plan
Scale: 1:50,000 (Blade Tip ZTV)

- Legend:**
- Proposed Turbines
 - Viewpoint Location
 - 90° Field of View Viewpoint
 - 53.5° Field of View Viewpoint

- Cumulative Wind Turbines
- Wind Farm Status (01/10/2018)**
- Wind Farm Status (01/10/2018)

- Wind Farm Status (01/10/2018)**
- Scoping
 - Operational; Under Construction

- Zone of Theoretical Visibility**
- No. of Turbines (133m) Visible**
- 1 - 3
 - 4 - 6
 - 7 - 9

Blade Tip:	133m
DTM:	OS T5
DTM resolution:	5m
Observer height:	2m
Surface features:	Excluded
Earth curvature:	Included

Title: Figure 9.31a
Viewpoint 11: Sgurr a' Choire Ghlais

Client: Infinergy

Source: © Crown copyright and database rights (2016)
OS (license No 0100031673)

Client: Infinergy

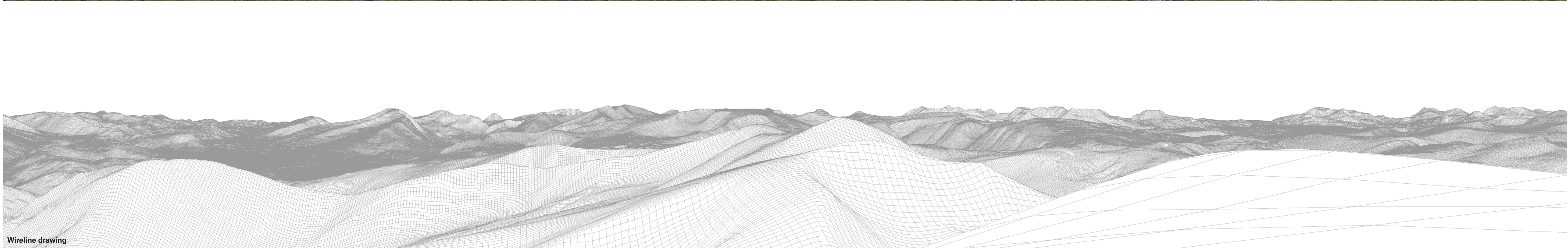
Drawn by: MJF **Checked:** JW

Date: 15/10/2018 **Figure:** 9.31a

Scale: **Revision No.:** B



Note:
1. ZTV: Created using ESRI ArcGIS 10.5 software using the following data and parameters:
Blade tip height: 133m
DTM Data: OS Terrain 5 DTM. Resampled to a 10m grid.
Observer height: 2m
No surface features, such as buildings or trees, were included in the analysis.
Earth curvature and light refraction has been included in calculations.



OS reference: 225881 E 843006 N
 Eye level: 1083.3 m AOD
 Direction of view: 285°
 Nearest turbine: 26.474 km

Horizontal field of view: 90° (cylindrical projection)
 Principal distance: 522 mm

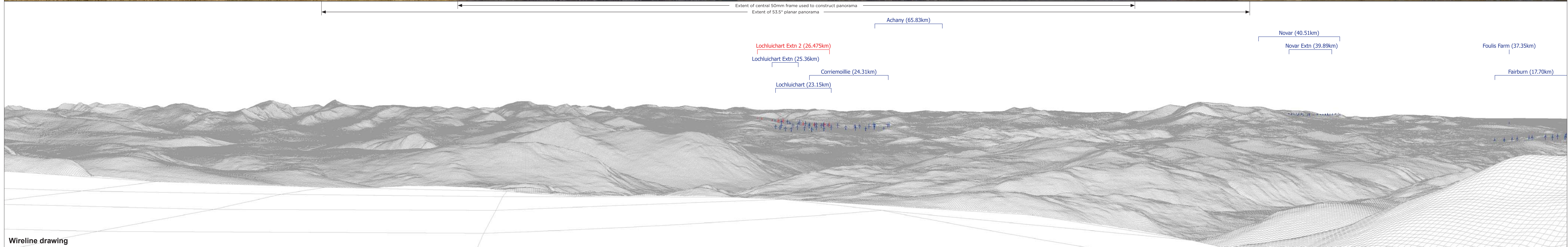
Camera: Canon EOS 6D
 Lens: 50mm (Canon EF 50mm f/1.4)
 Camera height: 1.5 m AGL
 Date and time: 24/05/18, 12:24

Figure: 9.31b
 Viewpoint 11: Sgurr a Choire Ghlais



Baseline photograph

This image provides landscape and visual context only



Wireline drawing

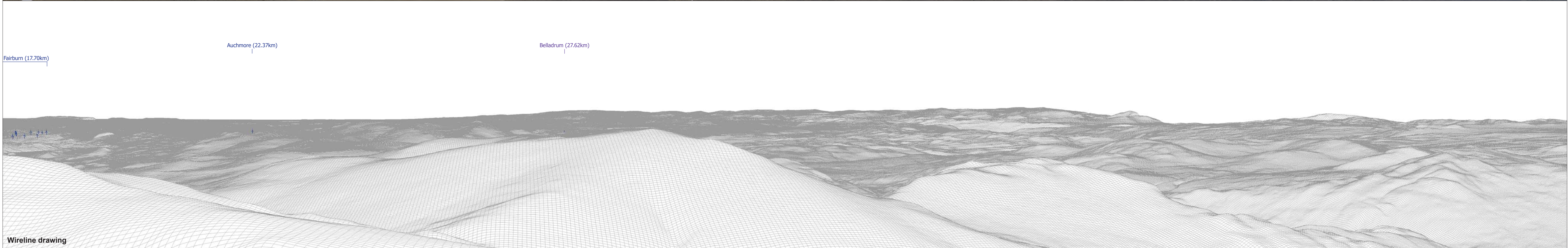
OS reference:	225881 E 843006 N	Horizontal field of view:	90° (cylindrical projection)	Camera:	Canon EOS 6D
Eye level:	1083.3 m AOD	Principal distance	522 mm	Lens:	50mm (Canon EF 50mm f/1.4)
Direction of view:	15°			Camera height:	1.5 m AGL
Nearest turbine:	26.474 km			Date and time:	24/05/18, 12:24

Figure: 9.31c
Viewpoint 11: Sgurr a Choire Ghlais



Baseline photograph

This image provides landscape and visual context only



Wireline drawing

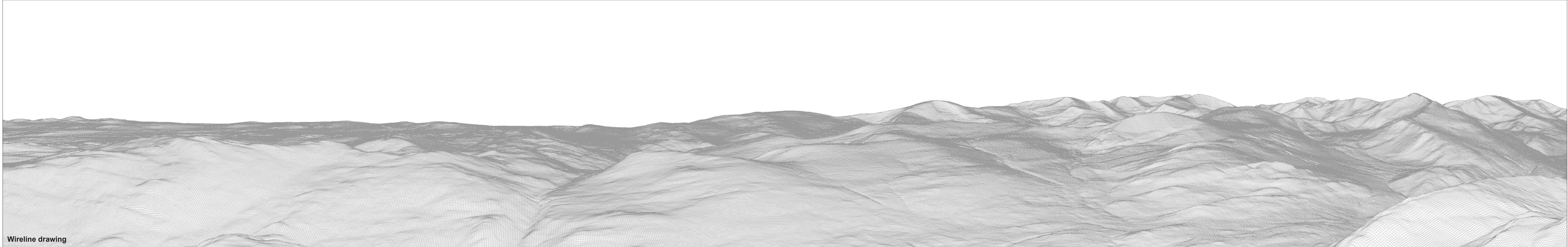
OS reference: 225881 E 843006 N	Horizontal field of view: 90° (cylindrical projection)	Camera: Canon EOS 6D
Eye level: 1083.3 m AOD	Principal distance: 522 mm	Lens: 50mm (Canon EF 50mm f/1.4)
Direction of view: 105°		Camera height: 1.5 m AGL
Nearest turbine: 26.474 km		Date and time: 24/05/18, 12:24

Figure: 9.31d
Viewpoint 11: Sgurr a Choire Ghlais



Baseline photograph

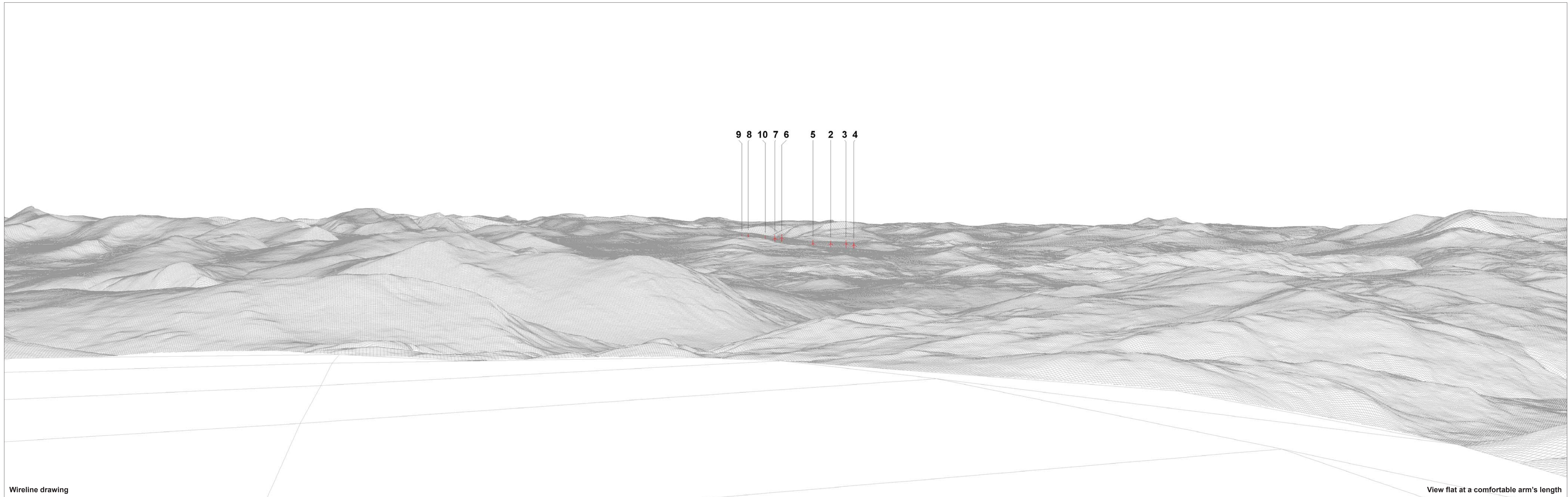
This image provides landscape and visual context only



Wireline drawing

OS reference: 225881 E 843006 N	Horizontal field of view: 90° (cylindrical projection)	Camera: Canon EOS 6D
Eye level: 1083.3 m AOD	Principal distance: 522 mm	Lens: 50mm (Canon EF 50mm f/1.4)
Direction of view: 195°		Camera height: 1.5 m AGL
Nearest turbine: 26.474 km		Date and time: 24/05/18, 12:24

Figure: 9.31e
Viewpoint 11: Sgurr a Choire Ghlais



9 8 10 7 6 5 2 3 4

Wireline drawing

View flat at a comfortable arm's length

OS reference: 225881 E 843006 N
Eye level: 1083.3 m AOD
Direction of view: 15°
Nearest turbine: 26.474 km

Horizontal field of view: 53.5° (planar projection)
Principal distance: 812.5 mm
Paper size: 841 x 297 mm (half A1)
Correct printed image size: 820 x 260 mm

Camera: Canon EOS 6D
Lens: 50mm (Canon EF 50mm f/1.4)
Camera height: 1.5 m AGL
Date and time: 24/05/18, 12:24

Figure: 9.31f
Viewpoint 11: Sgurr a Choire Ghlais



Photomontage (operational turbines have been montaged in this view)

View flat at a comfortable arm's length

OS reference:	225881 E 843006 N	Horizontal field of view:	53.5° (planar projection)	Camera:	Canon EOS 6D
Eye level:	1083.3 m AOD	Principal distance	812.5 mm	Lens:	50mm (Canon EF 50mm f/1.4)
Direction of view:	15°	Paper size:	841 x 297 mm (half A1)	Camera height:	1.5 m AGL
Nearest turbine:	26.474 km	Correct printed image size:	820 x 260 mm	Date and time:	24/05/18, 12:24

Figure: 9.31g
Viewpoint 11: Sgurr a Choire Ghlais